

# Practices in the SE to improve Soil Health

Gordon Mikell, Conservation Agronomist, SC NRCS

- 340 Cover Crops
- 329 Residue and Tillage Management  
Notill/Strip till/Direct Seed
- 328 Conservation Crop Rotation



# Challenges for the SE:

- Warmer temperatures: Microbial activity year round
- Hardpan, deep tillage required
- Early planted corn (March)
- Highly weathered soils low in OM

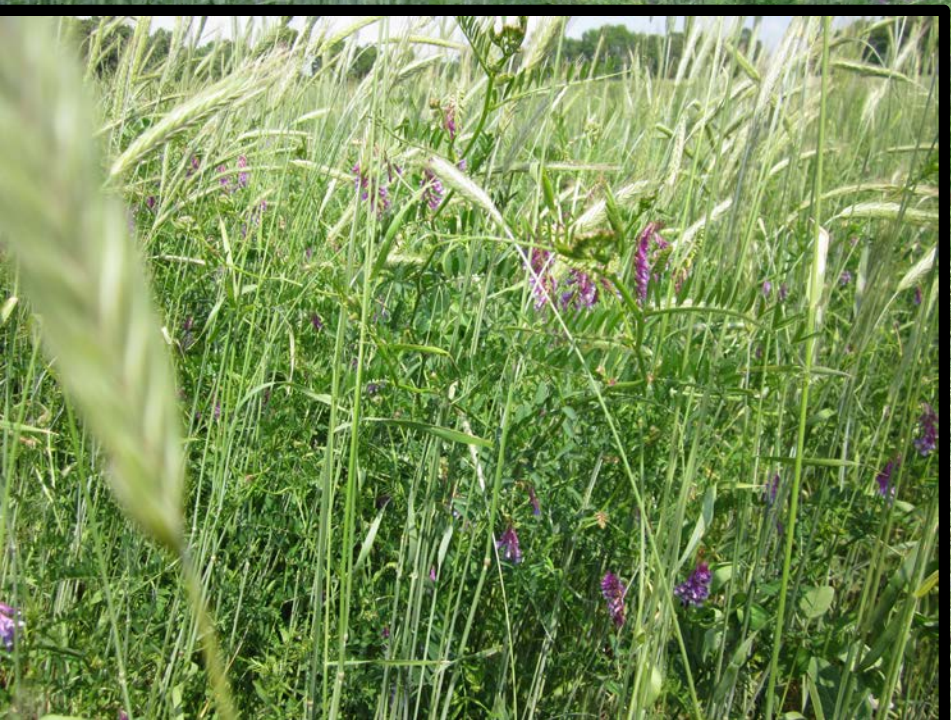
# Advantages:

- Grow Cover over winter
- 45-50" rainfall
- Opportunity for multiple crop rotations









# STANDING V/S ROLLED

## Planting green or dead?











# Cotton Planted without Rye: Different farmers



# 590 Nutrient Management:



# Tools to help promote Soil Health:

- Soil Thermometers
- Side by side comparisons (large plots)
- Shovel (earthworms) & visual observation (less weeds)
- Pin flag or compaction tester



## Yield Monitors





# Questions??

